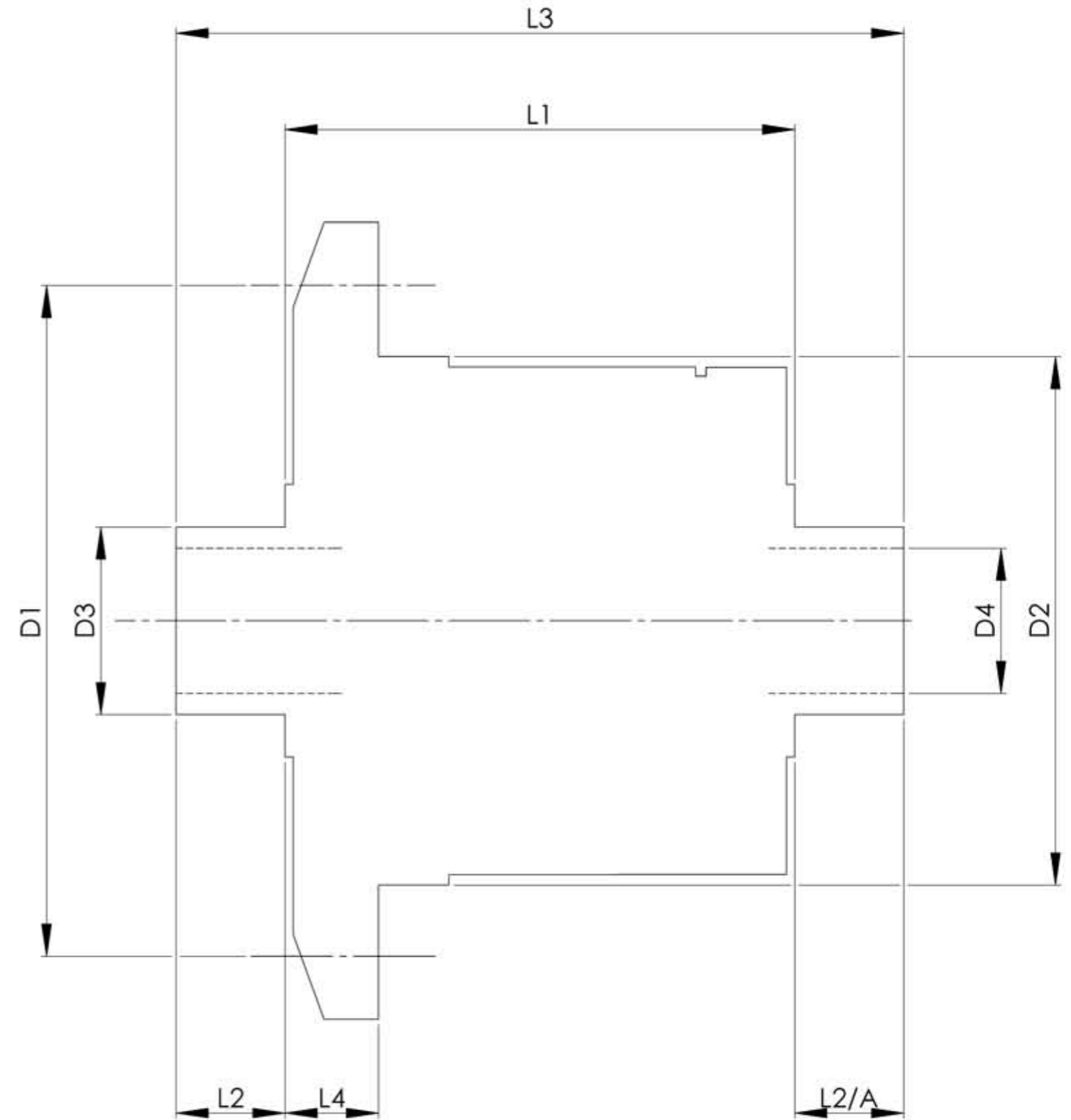


		INCH	MM
CROWN WHEEL BOLT PCD	D1	5.905	150
No. OF BOLTS		12	12
THREAD / THRO' HOLE		0.495	12.6
CROWN WHEEL SPIGOT DIA	D2	4.7645	121.0
BEARING DIA	D3	1.9700	50.0
BEARING DISTANCE	L1	5.275	134.0
SPIGOT LENGTH	L2	0.865	22.0
	L2/A	0.865	22.0
OVERALL LENGTH	L3	7.005	177.9
BEARING/CROWN WHEEL	L4	0.450	11.4
BORE	D4	1.3786	35.0
DRIVE SHAFT SPLINE:-			
No. OF TEETH		43	
PITCH		32/64 DP	
TYPE		FILLET ROOT	SIDE FIT
PRESSURE ANGLE		45 DEG	



TITLE R.W.D. DIFF DATA SHEET.
SCALE 1:1 U.O.S. SHEET 1 OF 1
<b>Drg. No. QDF2Q</b>

**Quaife Design & Development.**

IF IN DOUBT, ASK.

THIS DRAWING OR DESIGN IS STRICTLY CONFIDENTIAL & THE COPYRIGHT THEREIN IS THE EXCLUSIVE PROPERTY OF RT QUARE ENGINEERING LTD. AND MAY NOT BE USED, COPIED OR EXHIBITED WITHOUT THEIR WRITTEN PERMISSION.

FINISH. MACH,	GRIND@G
LIMITS. FRACT. $\pm 1/64"$ .	
DEC. $\pm 0.005"$ .	
MATERIAL.	
TREATMENT.	
ISSUE. 01 DATE. 19.5.05	
DRAWN BY. M.L.M.	
<b>Used In. PORSCHE G50</b>	