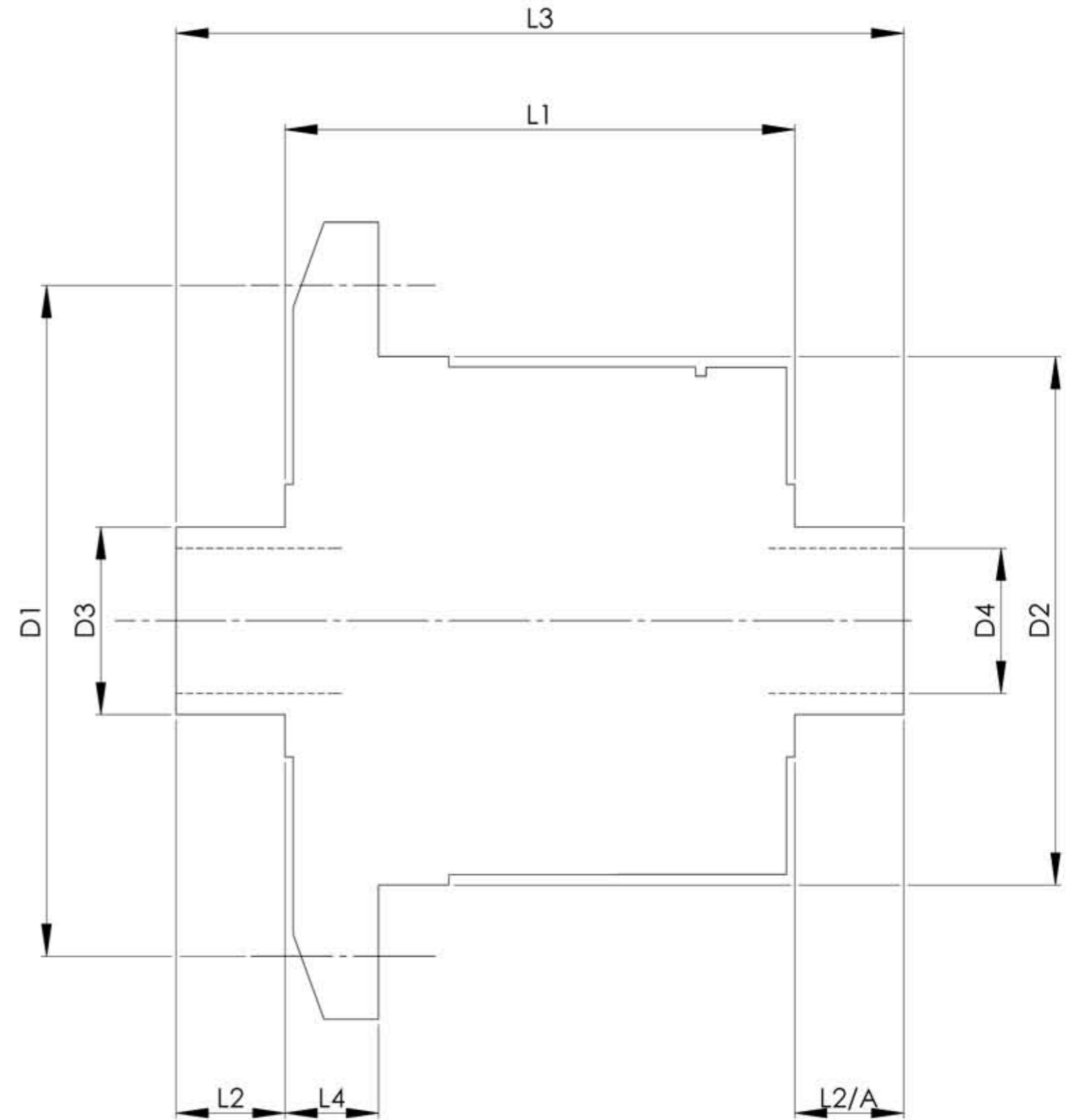


		INCH	MM
CROWN WHEEL BOLT PCD	D1	5.433	138
No. OF BOLTS		8	8
THREAD / THRO' HOLE		0.417	10.6
CROWN WHEEL SPIGOT DIA	D2	4.2533	108.0
BEARING DIA	D3	1.615	41.0
BEARING DISTANCE	L1	5.078	129.0
SPIGOT LENGTH	L2	0.690	17.5
	L2/A	0.690	17.5
OVERALL LENGTH	L3	6.458	164.0
BEARING/CROWN WHEEL	L4	0.846	21.5
BORE	D4	1.2998	33.0
DRIVE SHAFT SPLINE:-			
No. OF TEETH		33 & 37	
PITCH		32/64 DP	
TYPE		FILLET ROOT	SIDE FIT
PRESSURE ANGLE		45 DEG	



TITLE R.W.D. DIFF DATA SHEET.
SCALE 1:1 U.O.S. SHEET 1 OF 1
Drg. No. QDF4R

Quaife Design & Development.

IF IN DOUBT, ASK.

THIS DRAWING OR DESIGN IS STRICTLY CONFIDENTIAL & THE COPYRIGHT THEREIN IS THE EXCLUSIVE PROPERTY OF RT QUARE ENGINEERING LTD. AND MAY NOT BE USED, COPIED OR EXHIBITED WITHOUT THEIR WRITTEN PERMISSION.

FINISH. MACH,	GRIND@G
LIMITS. FRACT. ± 1/64".	
DEC. ± 0.005".	
MATERIAL.	
TREATMENT.	
ISSUE. 01 DATE. 23.5.05	
DRAWN BY. M.L.M.	
Used In. VW BEETLE 1303 / 1303	
33 / 37 Splines (IRS)	